

Venue Technical Information

Updated: 5/5/10

Audio

FOH

Yamaha PM3500 56 channel
2-BSS Onmidrive
1-BSS 960 1/3 octave graphic eq
1-Denon CD player
1-Furman
2-Yamaha SPX990
1-Yamaha REV500
2-D2
8-BSS Opal comps 422
4-BSS Opal gates 522
4-BSS quad gate 504

Monitor System

Yamaha PM3500 44 channel
8-DBX 2231 1/3 octave eq
10-BHS monitor wedges 12-2
1-Meyer dual 15" drum sub
8-Crown Macro 24x6
1-Crown Macro 2400
56 channel split snake, sub snakes
Assorted microphone / stand / XLR package
2-stage power stringers
NO SIDE FILLS -these are an additional expense if needed

Main Speakers

4-Adamson RA25
4-BHS dual 18" subs
1-Adamson 12-2 out fill
Crown Marco amps

Lighting

On stage

12 Martin Mac 250 (6 wash, 6 beams)
4 Atomic 3k Strobes 120v
1 Starhazer - water based

Downstage Truss

6 Source Four Pars – 575w
8 Opti-pars LED RGB

Console

1 Maxxyz Compact console

Plot

**see below

Power

Lighting - 200 a3p bare wire – upstage center - shares house lighting

Audio - 100 a3p cams – upstage stage right – dedicated

Stage Dimensions

32ft x 24ft x 3.5ft

Production Office

1 production office w/desk and couch

Dressing Rooms

3 dressing rooms each w/couches and chairs

Showers

None in-house

Internet

Wireless is available in-house. No hard line connection. Password is available on request.

Parking

**see below

Meters will be bagged surrounding venue – please advance all vehicles

No shore power available

Barricade

Barricade available in-house upon request (show cost)

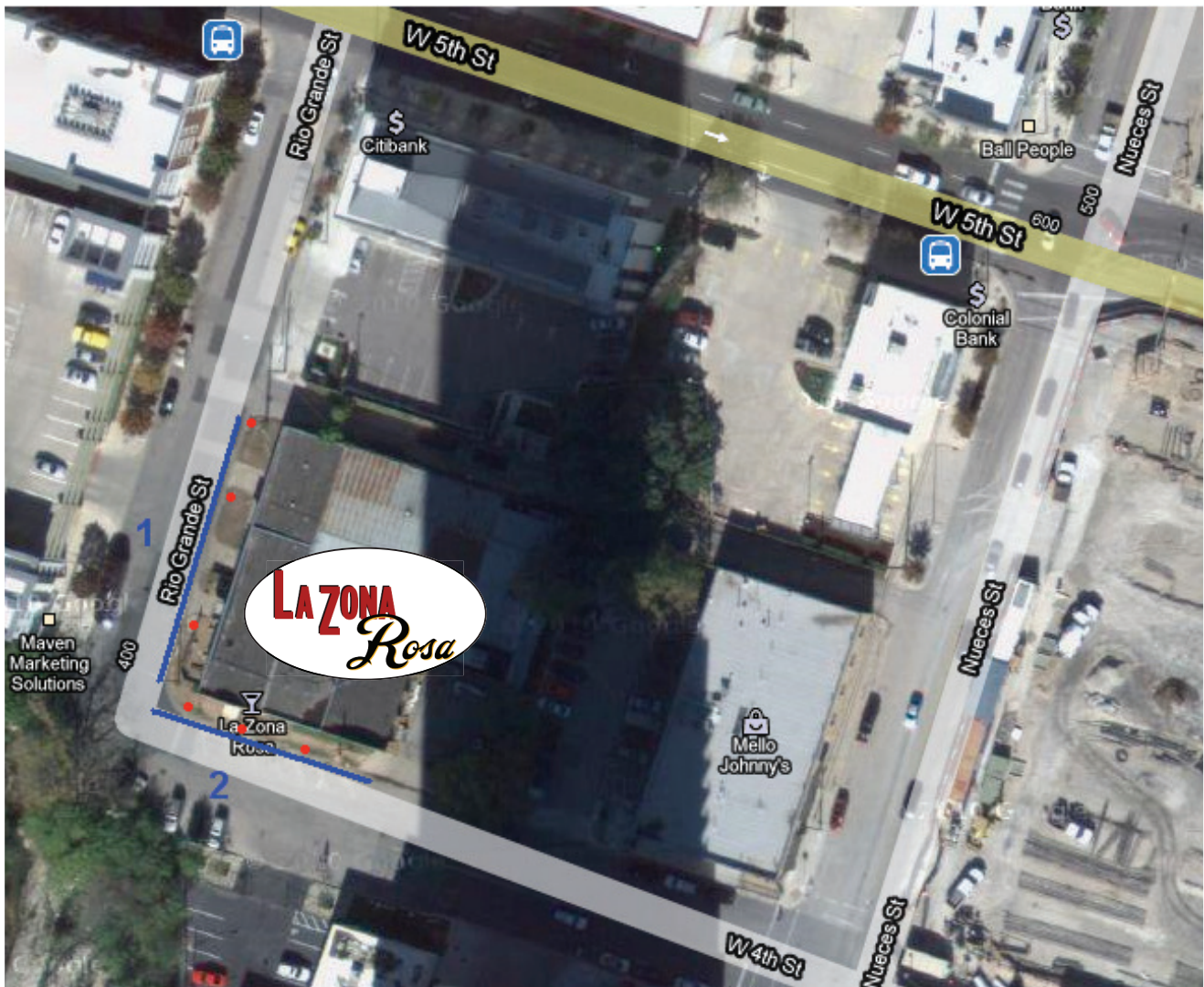
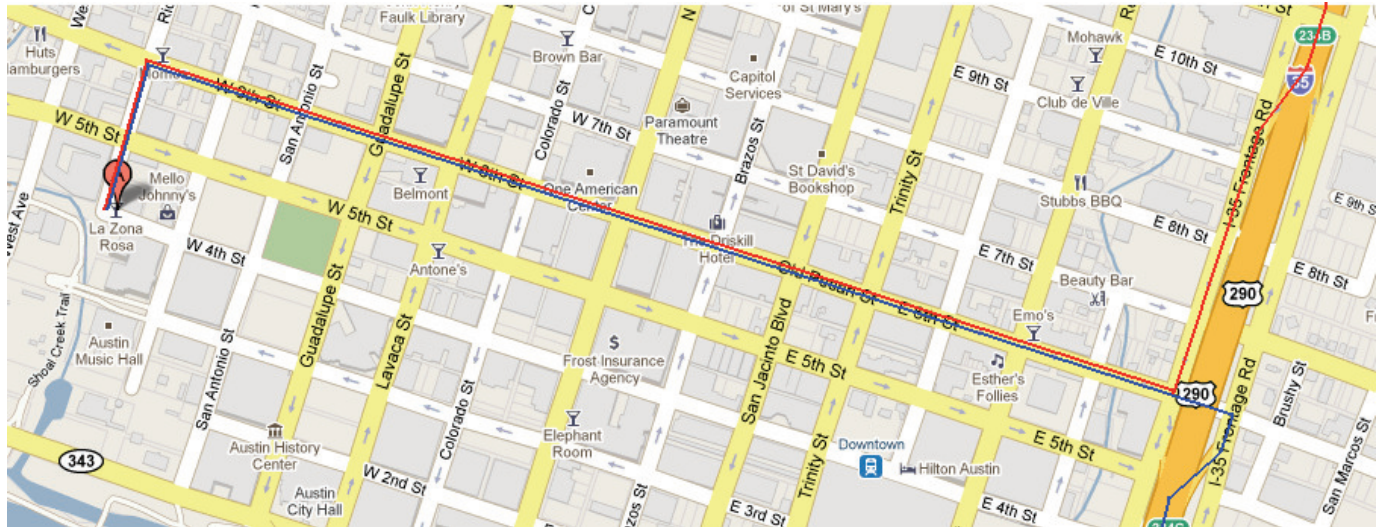
4' high – Mojo blow-thru

**** Lighting Render**



Parking and directions:

La Zona Rosa
612 West 4th Street
Austin TX 78701



Building layout:

